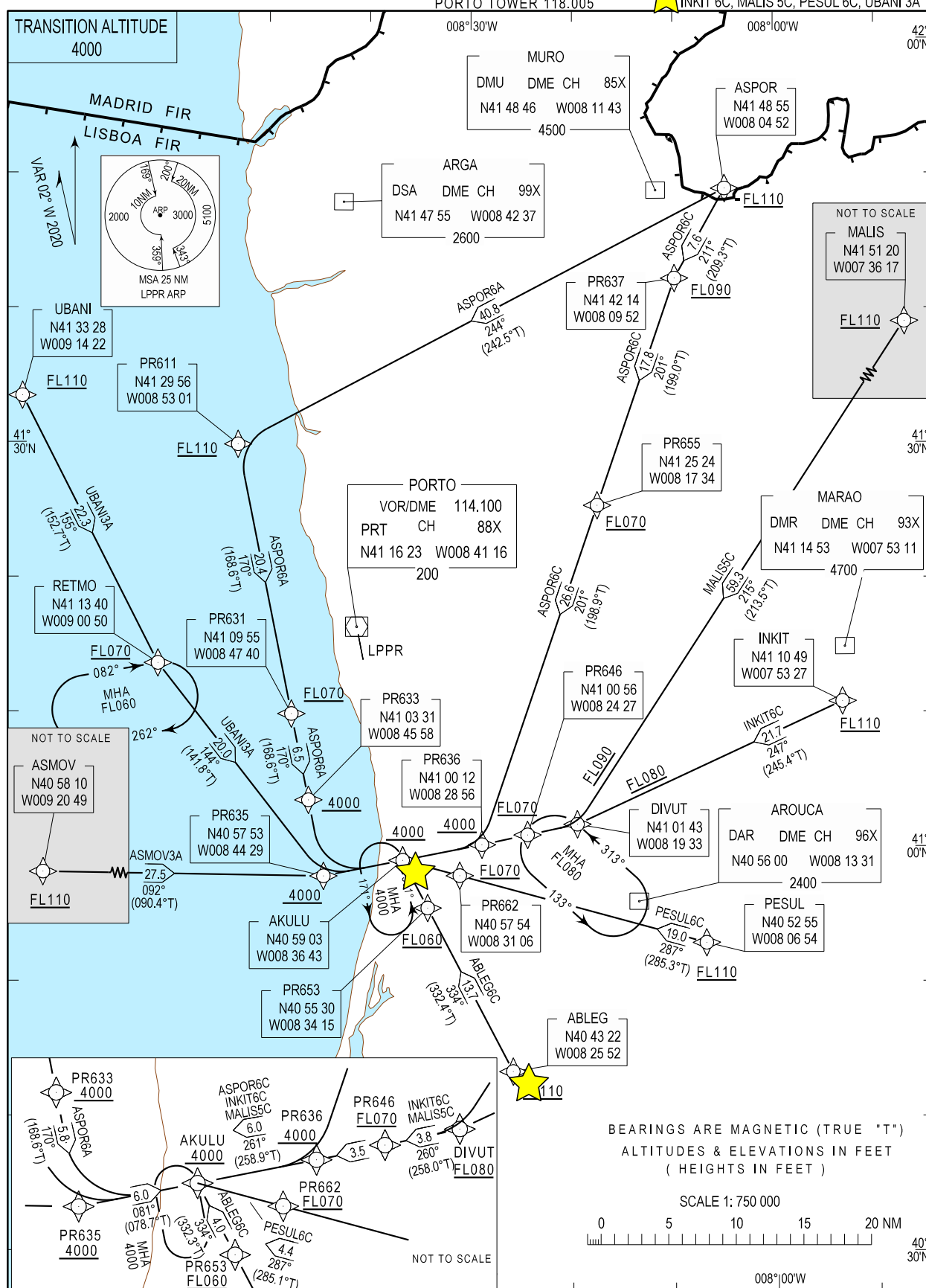


PORTO ARR INFORMATION 124.305  
LISBOA CONTROL 132.305  
PORTO APPROACH 120.910  
PORTO TOWER 118.005

RNAV RWY35

★ BLEG 6C, ASMOV 3A, ASPOR 6A, ASPOR 6C  
INKIT 6C, MALIS 5C, PESUL 6C, UBANI 3A



AD name inserted, new ATIS FREQ.

STAR Procedure Coding Table

Path Terminator	Waypoint			Course/Track MAG (True)	Dist NM	Turn Direction	Constraints		Nav Specs	Remarks
	Identifier	Flyover	Coordinates				Level	Speed		
Porto STAR RNAV 1 RWY 35 – ABLEG 6C										
IF	ABLEG	-	404321.57N 0082552.21W	-	-	-	+FL110	-	RNAV 1	Clearance limit: AKULU 4000ft
TF	PR653	-	405530.00N 0083415.13W	334 (332.4)	13.70	-	+FL060	-	RNAV 1	
TF	AKULU	-	405902.56N 0083642.55W	334 (332.3)	4.00	-	+4000ft	-	RNAV 1	
Porto STAR RNAV 1 RWY 35 – ASPOR 6A										
IF	ASPOR	-	414854.49N 0080452.32W	-	-	-	+FL110	-	RNAV 1	Clearance limit: AKULU 4000ft
TF	PR611	-	412955.61N 0085301.40W	244 (242.5)	40.78	-	+FL110	-	RNAV 1	
TF	PR631	-	410955.09N 0084740.45W	170 (168.6)	20.40	Left	+FL070	-	RNAV 1	
TF	PR633	-	410330.97N 0084558.39W	170 (168.6)	6.53	-	+4000ft	-	RNAV 1	
TF	PR635	-	405752.51N 0084428.75W	170 (168.6)	5.75	-	+4000ft	-	RNAV 1	
TF	AKULU	-	405902.56N 0083642.55W	081 (078.7)	6.00	Left	+4000ft	-	RNAV 1	
Porto STAR RNAV 1 RWY 35 – ASPOR 6C										
IF	ASPOR	-	414854.49N 0080452.32W	-	-	-	+FL110	-	RNAV 1	Clearance limit: AKULU 4000ft
TF	PR637	-	414214.34N 0080951.99W	211 (209.3)	7.64	-	+FL090	-	RNAV 1	
TF	PR655	-	412523.53N 0081733.63W	201 (199.0)	17.80	Left	+FL070	-	RNAV 1	
TF	PR636	-	410012.08N 0082856.07W	201 (198.9)	26.60	-	+4000ft	-	RNAV 1	
TF	AKULU	-	405902.56N 0083642.55W	261 (258.9)	6.00	Right	+4000ft	-	RNAV 1	
Porto STAR RNAV 1 RWY 35 – INKIT 6C										
IF	INKIT	-	411049.05N 0075326.91W	-	-	-	+FL110	-	RNAV 1	Clearance limit: AKULU 4000ft
TF	DIVUT	-	410142.79N 0081933.37W	247 (245.4)	21.73	-	+FL080	-	RNAV 1	
TF	PR646	-	410055.55N 0082427.11W	260 (258.0)	3.79	Right	+FL070	-	RNAV 1	
TF	PR636	-	410012.08N 0082856.07W	260 (258.0)	3.47	-	+4000ft	-	RNAV 1	
TF	AKULU	-	405902.56N 0083642.55W	261 (258.9)	6.00	-	+4000ft	-	RNAV 1	
Porto STAR RNAV 1 RWY 35 – ASMOV 3A										
IF	ASMOV	-	405809.81N 0092049.33W	-	-	-	+FL110	-	RNAV 1	Clearance limit: AKULU 4000ft
TF	PR635	-	405752.51N 0084428.75W	092 (090.4)	27.53	-	+4000ft	-	RNAV 1	
TF	AKULU	-	405902.56N 0083642.55W	081 (078.7)	6.00	Left	+4000ft	-	RNAV 1	
Porto STAR RNAV 1 RWY 35 – MALIS 5C										
IF	MALIS	-	415120.05N 0073617.22W	-	-	-	+FL110	-	RNAV 1	Clearance limit: AKULU 4000ft
TF	DIVUT	-	410142.79N 0081933.37W	215 (213.5)	59.32	-	+FL090	-	RNAV 1	
TF	PR646	-	410055.55N 0082427.11W	260 (258.0)	3.79	Right	+FL070	-	RNAV 1	
TF	PR636	-	410012.08N 0082856.07W	260 (258.0)	3.47	-	+4000ft	-	RNAV 1	
TF	AKULU	-	405902.56N 0083642.55W	261 (258.9)	6.00	-	+4000ft	-	RNAV 1	
Porto STAR RNAV 1 RWY 35 – PESUL 6C										
IF	PESUL	-	405255.32N 0080654.37W	-	-	-	+FL110	-	RNAV 1	Clearance limit: AKULU 4000ft
TF	PR662	-	405754.19N 0083106.37W	287 (285.3)	19.01	-	+FL070	-	RNAV 1	
TF	AKULU	-	405902.56N 0083642.55W	287 (285.1)	4.39	-	+4000ft	-	RNAV 1	
Porto STAR RNAV 1 RWY 35 – UBANI 3A										
IF	UBANI	-	413328.27N 0091422.27W	-	-	-	+FL110	-	RNAV 1	Clearance limit: AKULU 4000ft
TF	RETMO	-	411340.07N 0090049.71W	154 (152.7)	22.26	-	+FL070	-	RNAV 1	
TF	PR635	-	405752.51N 0084428.75W	144 (141.8)	20.05	Left	+4000ft	-	RNAV 1	
TF	AKULU	-	405902.56N 0083642.55W	081 (078.7)	6.00	Left	+4000ft	-	RNAV 1	